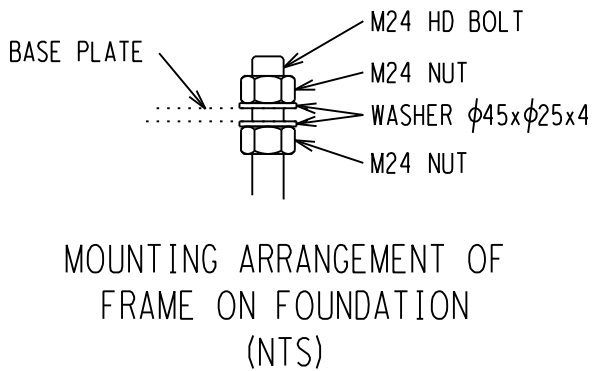


- NOTES:
- 1 ALL WELDING AND WELDING SYMBOLS SHALL CONFORM TO SANS 10044 PART 1 TO 5.
 - 2 ALL STRUCTURAL USE OF STEEL TO CONFORM TO SANS 10162.
 - 3 ALL STEEL TO BE GRADE S355JR/350WA (EXCEPT ANGLES $\leq 45\text{mm}$ TO BE MILD STEEL).
 - 4 ALL WELDS TO BE SEALED WELDED.
 - 5 STEELWORK TO BE HOT DIP GALVANIZED TO SANS 121.
 - 6 STEELWORK TO BE CHECKED AND STRAIGHTENED AFTER GALVANIZING.
 - 7 BOLTS, NUTS & WASHERS TO BE IN ACCORDANCE WITH SANS 1700.
 - 8 ALL MARKINGS TO BE STAMPED ONTO STEELWORK AND SHALL BE CLEARLY LEGABLE AFTER GALVANIZING.
 - 9 NO STEEL EXTENSIONS WILL BE ALLOWED ON ANY STEELWORK.
 - 10 NO SECTIONS TO BE BUTT WELDED.
 - 11 ALL STEELWORK TO BE FABRICATED, ERECTED AND LEVELED TO A TOLERANCE OF $\pm 1.5\text{mm}$.
 - 12 ALL HOLES TO BE 18mm DIA UNLESS OTHERWISE STATED.

BOLT SCHEDULE									
MARK	BOLT SIZE mm	MILD STEEL GRADE	PITCH mm	LENGTH mm	NO OFF BOLTS	NO OFF NUTS	NO OFF WASHERS	TORQUE Nm	TOTAL MASS KG
1	M16	4.8	2	60	8	8	8 FLAT 8 BEVEL	120	1.64
MASS OF BOLTS, WASHERS AND NUTS									1.64

STEEL SCHEDULE AND MASS					
ITEM	QTY	DESCRIPTION	CUTTING LENGTH (mm)	TOTAL LENGTH (M)	TOTAL MASS (kg)
1BT 3	1	MILD STEEL PLATE 420 x 20	420	0.42	27.68
1BT 4	4	MILD STEEL PLATE 400 x 12	110	0.44	16.58
1BT 5	6	TF CHANNEL 100 x 50 x 11kg/m	70	0.42	4.62
1BT 6	1	MILD STEEL PLATE 460 x 20	260	0.24	18.77
1BT 9	1	MS ROUND TUBE $\phi 219 \times 6$ WALL	2850	2.85	89.86
1BT 10	2	TF CHANNEL 152 x 76 x 18kg/m	3310	6.62	118.50
TOTAL MASS =					276.01



D-DT-5226	SHEET 1A	TUBULAR BUSBAR SOIL TYPE 1 & 2
DRG NO.	SHEET NO.	REFERENCE DRAWINGS

THIS DRAWING IS THE NEW OFFICIAL REVISION AND IT SUPERCEDES ALL OTHER PUBLISHED DRAWINGS					
0	FIRST ISSUE			/ /	
REV	REVISION DESCRIPTION	BY	CHKD	AUTH	DATE
Eskom Distribution					
AUTH: B HILL					
DATE: 06/10/2011					
CHKD: N WEBBER					
DATE: 04/10/2011					
DRAWN: G BEETGE					
DATE: 04/10/2011					
TUBULAR BUSBAR - 22kV SINGLE TUBULAR SUPPORT STEELWORK MANUFACTURING DETAILS AND ASSEMBLY - 1.5M PHASE CRS				SET	SHEET
D-DT-5226					2B
				REVISION	0